

Map Notes

1. Municipal boundary data based on USGS mapping provided by the NH GIS database at GRANIT and updated through 2016.
2. Tax parcel and land use data derived from tax mapping by Normandeau Associates current through 2016.
3. Local roads and highways data based on NHDOT mapping current through 2016.
4. Hydrography based on stream and water feature data developed by USGS and the NH Geologic Survey, and automated by GRANIT.
5. Conservation and public lands data automated by GRANIT and current through 2016.

Developable Land Calculation

The acreage of potentially developable land has been calculated by removing the following:

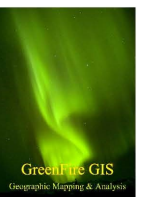
1. All lots 3 acres or less.
2. All permanently conserved lands.
3. Public (municipal) lands.
4. Constraints to development within lots (steep slopes, floodplain, wetlands).

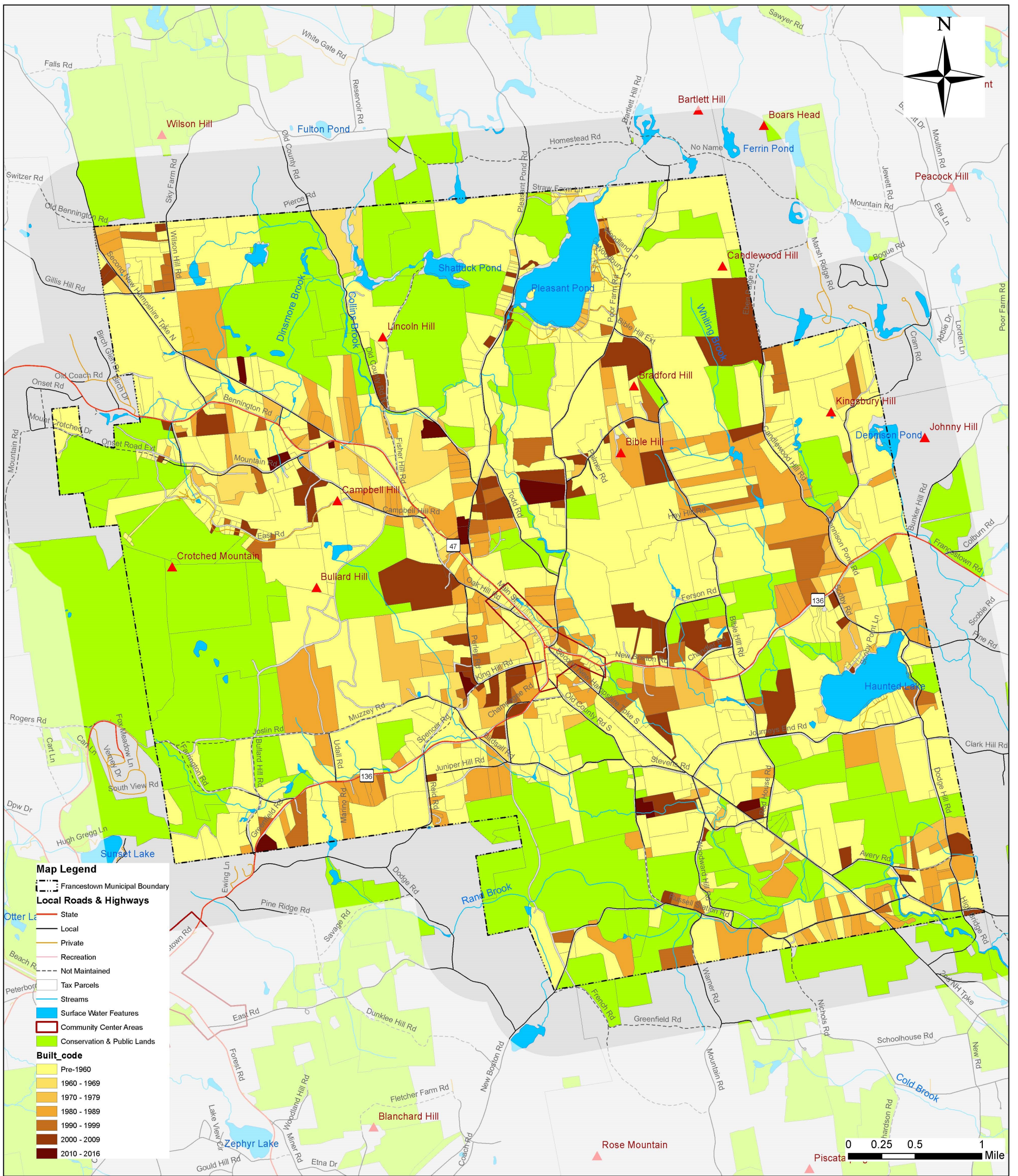
This leaves 9,877 acres, or about 52% of the town, available for potential new development or re-development in cases of land use conversion. Some lots are currently classified as single family residences, therefore already developed to some extent. However, many of these lots are large and may be subdivided for new residential or other land uses. Similarly, existing commercial/industrial lands may be converted to other uses.

Developable Land - 2016

Francestown Master Plan Land Use Update - 2017

Map Prepared by
GreenFire GIS
PO Box 294
North Sutton, NH 03260





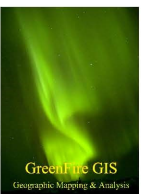
Map Notes

1. Municipal boundary data based on USGS mapping provided by the NH GIS database at GRANIT and updated through 2016.
2. Tax parcel and land use data derived from tax mapping by Normandeau Associates current through 2016.
3. Local roads and highways data based on NHDOT mapping current through 2016.
4. Hydrography based on stream and water feature data developed by USGS and the NH Geologic Survey, and automated by GRANIT.
5. Conservation and public lands data automated by GRANIT and current through 2016.

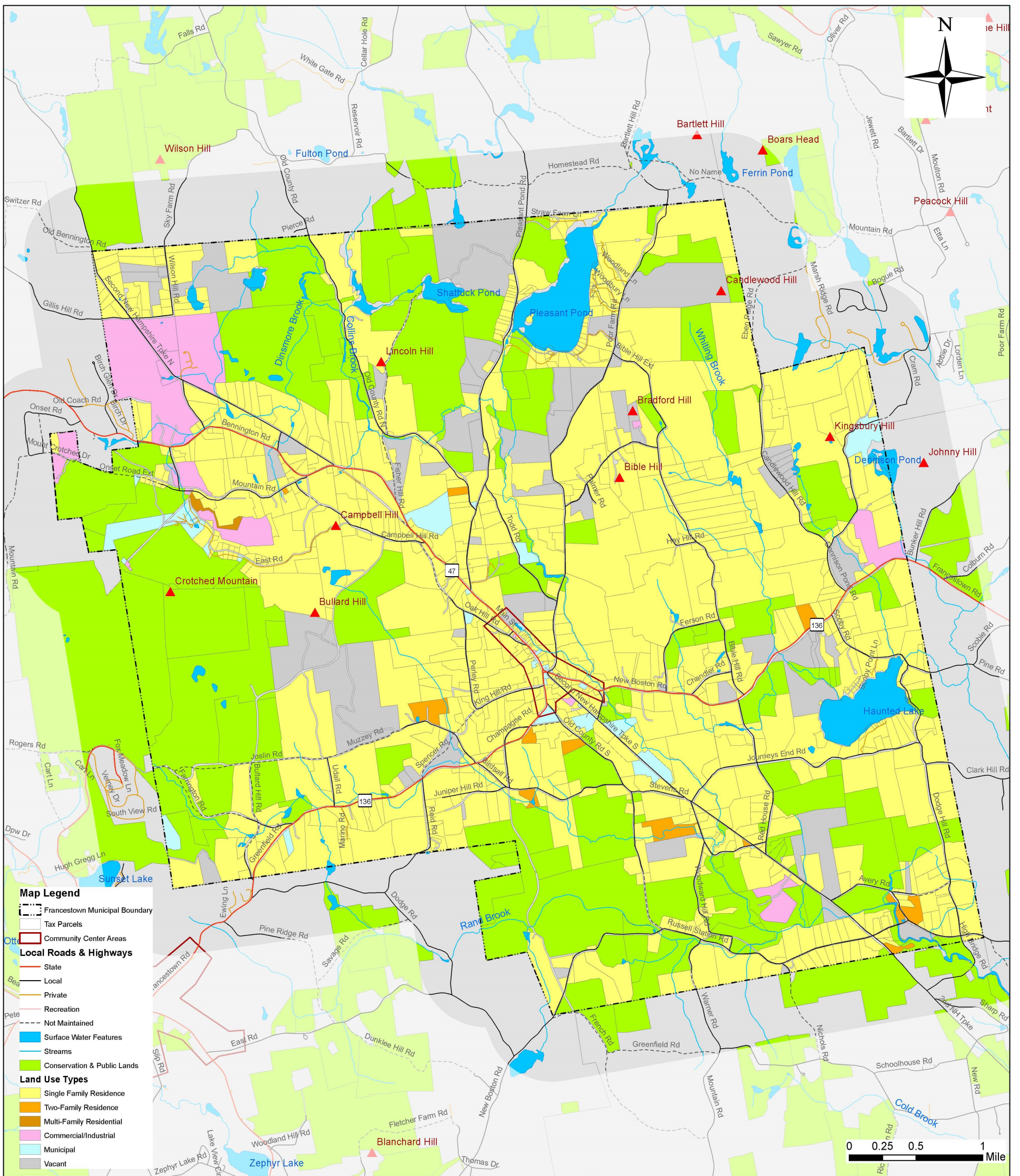
Development Trends 1960 - 2016

Francestown Master Plan Land Use Update - 2017

Map Prepared by
GreenFire GIS
PO Box 294
North Sutton, NH 03260



June 29, 2017



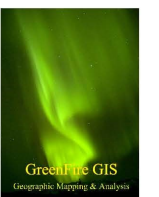
Map Notes

1. Municipal boundary data based on USGS mapping provided by the NH GIS database at GRANIT and updated through 2016.
2. Tax parcel and land use data derived from tax mapping by Normandeau Associates current through 2016.
3. Local roads and highways data based on NHDOT mapping current through 2016.
4. Hydrography based on stream and water feature data developed by USGS and the NH Geologic Survey, and automated by GRANIT.
5. Conservation and public lands data automated by GRANIT and current through 2016.

Existing Land Use - 2016

Francestown Master Plan Land Use Update - 2017

Map Prepared by
GreenFire GIS
PO Box 294
North Sutton, NH 03260



June 29, 2017