



MIXED GLASS

PROCESSED GLASS AGGREGATE (PGA)



A NRRA Cooperative Recycling Program



Although "glass-to-glass" recycling has been the traditional method, due to strict contamination guidelines, storage space requirements and labor costs, managing a color separated glass program can be a challenge for many municipal recycling programs and businesses. To assist members in the efficient and economical collection, storage and recycling of mixed color glass, the Northeast Resource Recovery Association (NRRA) offers its members an "easy-to-use" mixed glass recycling program.

NRRA Processed Glass Aggregate (PGA) Program allows communities to collect, store and recycle mixed glass in one bin or pile! NRRA has teamed with communities (throughout New Hampshire and Vermont) to act as consolidation sites and accept mixed glass from surrounding member communities. Once the piles of mixed glass at the aggregation sites reach 800 - 1000 tons in size, NRRA coordinates the "crushing" of the pile by an industrial crusher to reduce the material to a 3/8" or smaller material to then be used in road/construction projects as aggregate.

PROGRAM DETAILS

- ♻️ Contact NRRA at (603) 736-4401 to sign up for this program
- ♻️ Choose how the Mixed Glass will be stored at the facility (i.e., on the ground, in a simple bunker or in a container)
- ♻️ Arrange for transportation - Need assistance in arranging trucking? Contact NRRA. Below please find transportation options used by member communities participating in this program:
 - ♦ Roll Off Container (30 or 40 Yard Container) - average weight is 12 tons
 - ♦ Dump Body Trailer (70 Yard Trailer) - average weight is 32 tons
 - ♦ Local Highway Department Dump Trucks - 10 wheeler - average weight 10 tons
- ♻️ Contact NRRA to coordinate delivery of the Mixed Glass to an aggregation site (Each location has specific delivery hours. Please contact NRRA to make arrangements for delivery)

Your Non-Profit Recycling Cooperative:

Partnering to make recycling strong through economic and environmentally sound solutions

Northeast Resource Recovery Association, 2101 Dover Rd, Epsom, NH 03234

Telephone: (603) 736-4401 Fax: (603) 736-4402 E-mail: info@nrra.net Web Site: www.nrra.net

Updated 6/2018

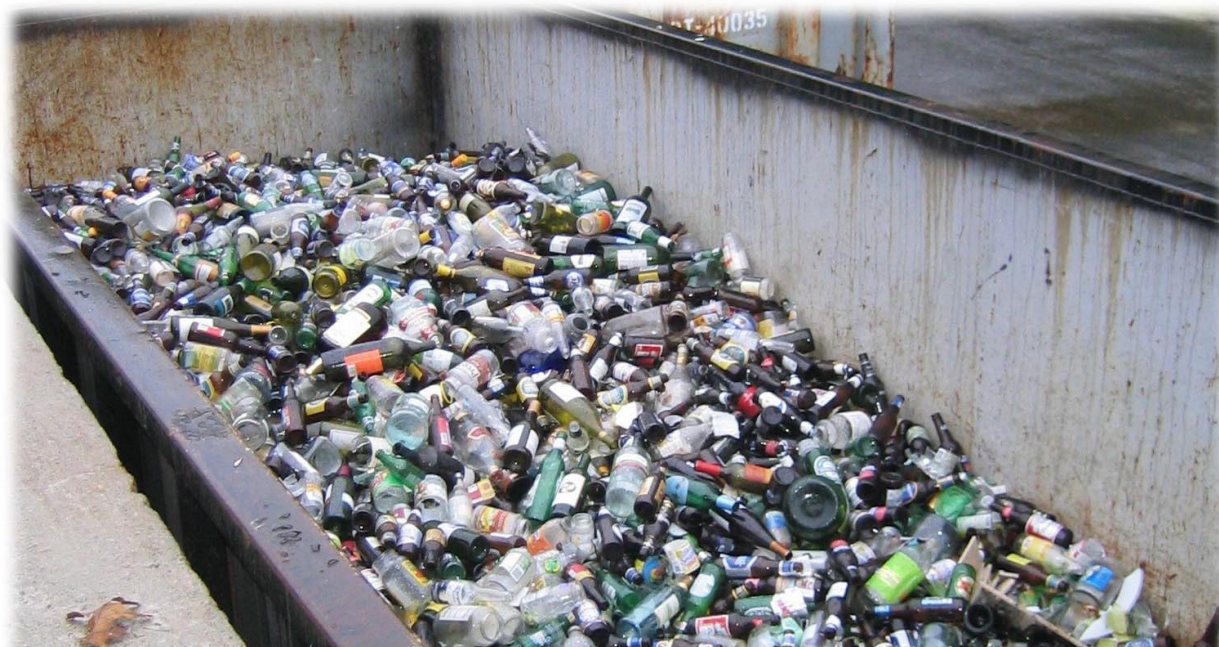
Acceptable Materials

- ♦ ANY clear/colored glass beverage container (if possible, remove caps)
- ♦ ANY clear/colored glass food container (if possible, remove caps)

Unacceptable Materials

- | | |
|-------------------------------------------|---------------------------|
| ♦ Headlights | ♦ Asphalt |
| ♦ Thermometers | ♦ Excessive Rocks or Dirt |
| ♦ Incandescent or Fluorescent Light Bulbs | ♦ Wood |
| ♦ Plastics | ♦ Aluminum/Tin |
| ♦ Automotive / Windshield Glass | ♦ Plexiglas |
| ♦ Pyrex | ♦ Mirrors |
| ♦ Drinking Glasses | ♦ Trash |
| ♦ Window Panes | |
| ♦ Ceramics (i.e., coffee mugs) | |
| ♦ Porcelain (i.e., toilets, sinks, etc.) | |

Please call NRRA for current pricing.



Your Non-Profit Recycling Cooperative:

Partnering to make recycling strong through economic and environmentally sound solutions

Northeast Resource Recovery Association, 2101 Dover Rd, Epsom, NH 03234

Telephone: (603) 736-4401 Fax: (603) 736-4402 E-mail: info@nrna.net Web Site: www.nrra.net

Updated 6/2018